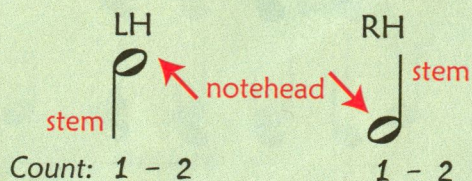


Half Note

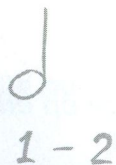
A **half note** looks like a quarter note with an open notehead.



1. Draw another half note for the LH.
Write "1 - 2" below it for the counts.



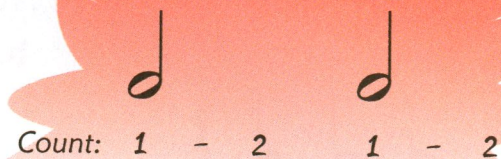
2. Draw another half note for the RH.
Write "1 - 2" below it for the counts.



Fun Zone

3. Complete the gameboard by adding a bar line after every 4 counts. Begin at **Start** and follow the arrows.

Rhythm 3



4. How many times do you see Rhythm 3 on the gameboard?